

FIGURE 1 - FULLY THREADED CONFIGURATION

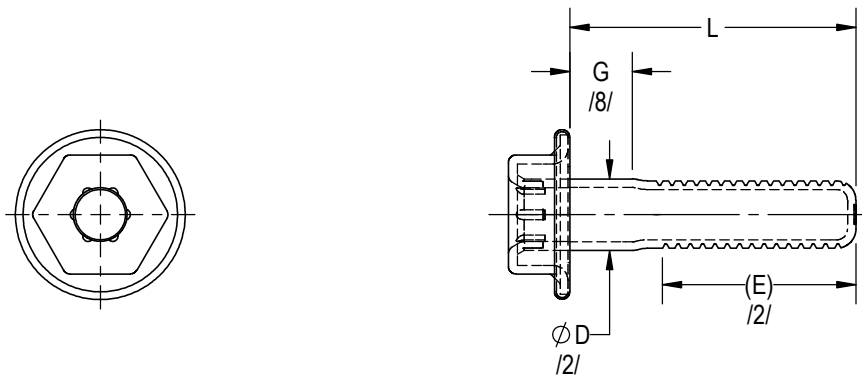


FIGURE 2 - GRIP CONFIGURATION

THREAD AND DIMENSION DATA

| CODE | THREAD /1/ | A | (B) | ϕC /6/ | ϕD $\pm .002$ /2/ | (E) /2/ | ϕF /3/ | H | (R) | (U) | W /6/ | RECESS NUMBER /4/ | RECESS DEPTH MIN /5/ |
|------|---------------------|--------------|-----|-----------------|-------------------------------|------------|-----------------|------|-----|-----|----------|-------------------------|-------------------------------|
| 3 | .1900-32 UNJF-3A | .313 .302 | .35 | .448 .438 | .186 | .470 | .190 .180 | .125 | .03 | .04 | .045 | T20 | .080 |

UNLESS OTHERWISE SPECIFIED, ALL DIMENSIONS ARE IN INCHES AND TOLERANCES ARE AS SHOWN BELOW. DIMENSIONAL TOLERANCES AND SYMBOLS PER ANSI Y14.5M-1982.

THE PARTS SHOWN IN THIS DRAWING ARE PROPRIETARY AND MAY BE THE SUBJECT OF ISSUED UNITED STATES AND FOREIGN PATENTS AND PATENTS PENDING. UNAUTHORIZED REPRODUCTION AND/OR DISTRIBUTION OF THIS DRAWING IS SPECIFICALLY PROHIBITED.

**CLICK
BOND**

2151 LOCKHEED WAY
CARSON CITY, NEVADA 89706

| APPROVALS | | DATE |
|-----------|------------|---------|
| DRAWN | LS | 19MAR19 |
| CHECKED | <i>DAC</i> | 17NOV23 |
| RELEASED | JCH | 20NOV23 |
| REVISED | GTP | 17NOV23 |

TITLE
SCREW, HEX HEAD, SIX LOBE DRIVE - INTERNAL

| | | | | | | | | |
|-------|------------|----------|------------|---------|------------|--------------|---------------|----------|
| .XX | $\pm .03$ | CHECKED | <i>DAC</i> | 17NOV23 | SIZE | CAGE CODE | DWG. NO. | REV. |
| .XXX | $\pm .010$ | RELEASED | JCH | 20NOV23 | A | 66530 | CB5075 | 5 |
| .XXXX | $\pm .001$ | REVISED | GTP | 17NOV23 | SCALE: 2:1 | 17NOV23 | SHEET 1 OF 2 | |

LENGTH DATA

| CODE | L ±.016 | G ±.016 |
|------|------------|------------|
| 6 | .375 | N/A |
| 8 | .500 | N/A |
| 10 | .625 | .125 |
| 12 | .750 | .250 |
| 14 | .875 | .375 |
| 16 | 1.000 | .500 |
| 18 | 1.125 | .625 |
| 20 | 1.250 | .750 |
| 22 | 1.375 | .875 |
| 24 | 1.500 | 1.000 |
| 26 | 1.625 | 1.125 |
| 28 | 1.750 | 1.250 |
| 30 | 1.875 | 1.375 |
| 32 | 2.000 | 1.500 |

MATERIAL DATA

| CODE | MATERIAL | SPEC. |
|------|------------|----------|
| CR | A-286 CRES | AMS 5525 |

FINISH DATA /12/

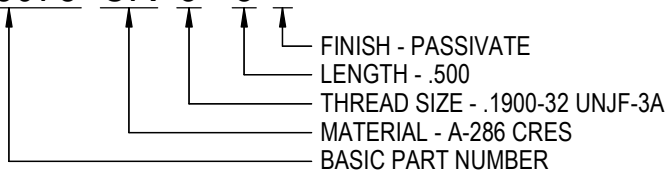
| CODE | FINISH | SPEC. |
|------|-------------------|-----------------|
| NONE | PASSIVATE | AMS 2700 |
| ZN | ZINC-NICKEL PLATE | AMS 2417 TYPE 2 |

NOTES:

- /1/ THREAD PER AS8879, EXCEPT 3 INCOMPLETE THREADS PERMISSIBLE ON THREAD LEAD AND RUNOUT.
- /2/ ØD AND E APPLY TO -10 AND LONGER SCREWS.
- /3/ ØF APPLIES TO THE UNTHREADED PORTION OF THE FASTENER SHANK FOR -6 AND -8 SCREWS.
- /4/ RECESS IS NAS1800 COMPATIBLE. ORIENTATION OF RECESS SLOTS TO HEX IS UNCONTROLLED.
- /5/ RECESS DEPTH TO BE MEASURED FROM FACE OF HEAD TO BOTTOM OF LOBES.
- /6/ CAPTIVE WASHER SHALL BE CRIMPED AROUND SCREW FLANGE TO FREELY ROTATE AND TO FULLY COVER SCREW FLANGE EDGE.
- /7/ BOTTOM OF SCREW SHALL BE STAMPED WITH CLICK BOND LOGO "CB".
- /8/ GRIP LENGTH IS FROM BEARING SURFACE OF CAPTIVE WASHER TO THE END OF THE FULL CYLINDRICAL PORTION OF SHANK.
- 9 MAX SEATING TORQUE OF 25 in-lbs.
- 10 PROCUREMENT SPECIFICATION: CBPRS-001.
- 11 FOR NON-STRUCTURAL APPLICATIONS ONLY.
- /12/ ALL DIMENSIONS BEFORE PLATING.
- /13/ EITHER CHAMFER OR RADIUS IS ACCEPTABLE.

EXAMPLE PART NUMBER

CB5075 CR 3 - 8



| | | | |
|-----------------------|---|---------------------------|------------------|
| CLICK BOND | 2151 LOCKHEED WAY CARSON CITY, NEVADA 89706 | | |
| | TITLE SCREW, HEX HEAD, SIX LOBE DRIVE - INTERNAL | | |
| SIZE A | CAGE CODE 66530 | DWG. NO. CB5075 | REV. 5 |
| SCALE: 2:1 | | 17NOV23 | SHEET 2 OF 2 |